

## ACOUSTIC CHANNEL BOARD

TO J11 OF MASTER BOARD  
SEE SHEET 2.

PART # 07-572-05 & -06 & -07 & -08

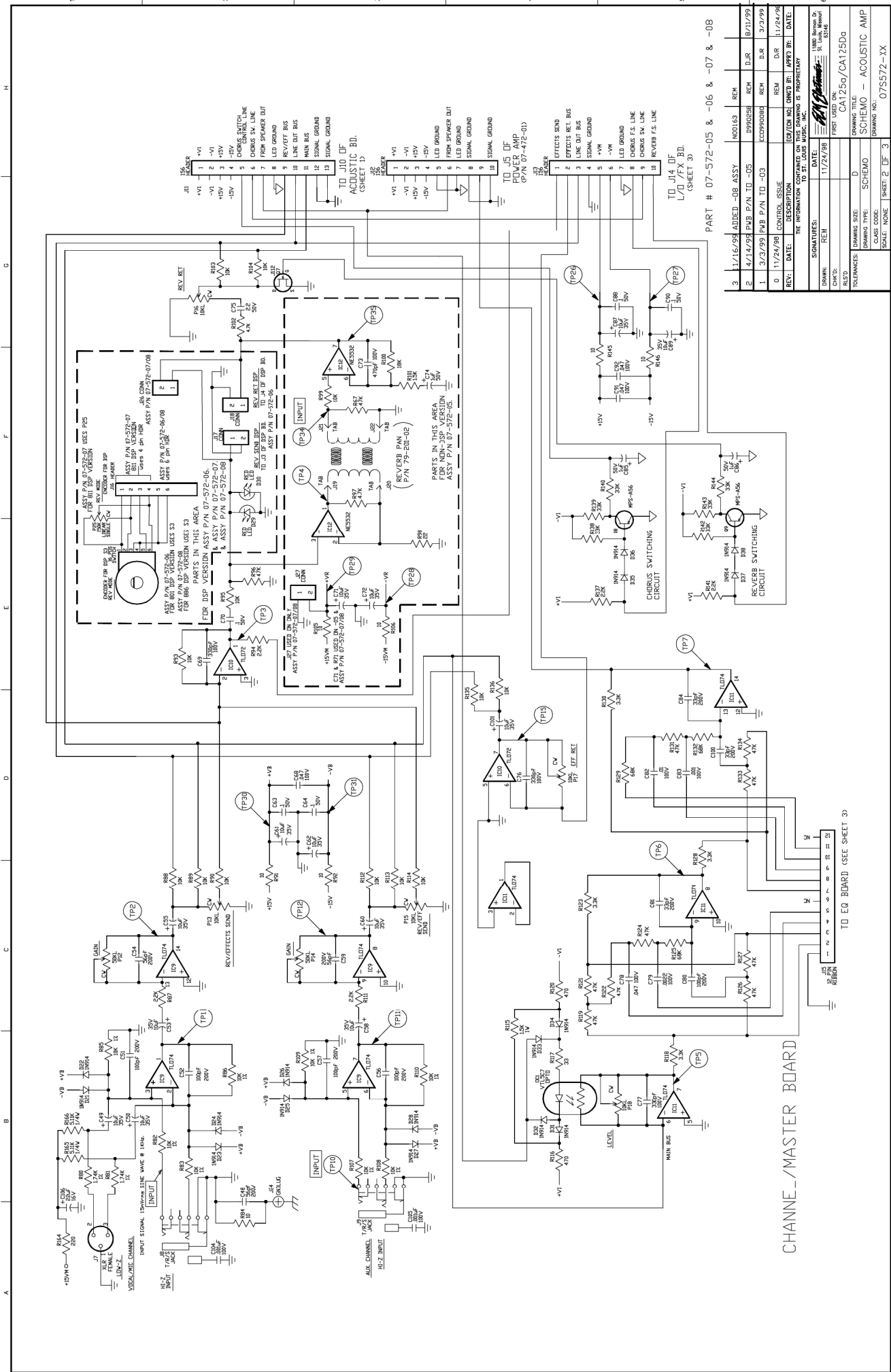
REV.	DATE	DESCRIPTION	BY	CHKD	DATE	APP'D	DATE
3	1/16/99	ADDED -08 ASSY	M00163	REM			8/1/99
2	4/14/98	PAID P/N TO -05	D992938	REM	J.R.		8/1/99
1	3/3/99	PAID P/N TO -03	SC099086	REM	J.R.		3/3/99
0	11/24/98	CONTROL ISSUE		REM	DIR		11/24/98

SIGNATURES:	DATE:
DESIGNED BY:	11/24/98
DRAWN BY:	
CHECKED BY:	

DRAWING TITLE	SCHEMO	ACCOLISTIC AMP
CA125g/CA125Dg	D	
CLASS CODE:	SCHEMO	
DRAWING NO.:		
SCALE:	NONE	
SHEET:	1	OF 3
DRAWING NO.:	075572-XX	



REV.	DATE	DESCRIPTION	BY	CHKD	APP'D	DATE
3	11/16/98	ADDED -08 ASSY	INDUS3	REM	DJR	8/21/99
2	4/14/99	PUB P/N TO -05	DP9905E	REM	DJR	3/3/99
1	3/23/99	PUB P/N TO -03	EC090908E	REM	DJR	11/24/98
0	11/24/98	CONTROL ISSUE	REM	REM	DJR	11/24/98

REV. DATE DESCRIPTION BY CHKD APP'D DATE

FOR CON. INFO. CONTACT ST. LOUIS MUSIC, INC.

THE INFORMATION CONTAINED ON THIS DRAWING IS PROPRIETARY TO ST. LOUIS MUSIC, INC.

SIGNATURES: \_\_\_\_\_ DATE: 11/24/98

CHKD: \_\_\_\_\_

DESIGN: \_\_\_\_\_

TOLERANCES: FRACTIONS: 0

DRAWING TYPE: SCHEMATIC

CLASS CODE: \_\_\_\_\_

SCALE: NONE

SHEET: 2 OF 3

DRAWING NO.: 07S572-XX

REV. DATE DESCRIPTION BY CHKD APP'D DATE

FOR CON. INFO. CONTACT ST. LOUIS MUSIC, INC.

THE INFORMATION CONTAINED ON THIS DRAWING IS PROPRIETARY TO ST. LOUIS MUSIC, INC.

SIGNATURES: \_\_\_\_\_ DATE: 11/24/98

CHKD: \_\_\_\_\_

DESIGN: \_\_\_\_\_

TOLERANCES: FRACTIONS: 0

DRAWING TYPE: SCHEMATIC

CLASS CODE: \_\_\_\_\_

SCALE: NONE

SHEET: 2 OF 3

DRAWING NO.: 07S572-XX

CHANNEL-MASTER BOARD

TO EQ BOARD (SEE SHEET 3)

PART # 07-572-05 & -06 & -07 & -08

(SHEET 3)

CAUTION: SHOCK HAZARD!! THIS UNIT CONTAINS HAZARDOUS VOLTAGE. DISCONNECT POWER AND BE SURE POWER SUPPLY IS DISCHARGED BEFORE TOUCHING INTERNAL PARTS. UNLESS NOTED, RESISTOR VALUES IN OHMS, 1/4W-5% TOL. CAPACITOR VALUES IN MICROFARADS, 50V-10% TOL. VOLTAGES ARE MEASURED WITH 1 MEGOHM OSCILLOSCOPE AND 10 MEGOHM DIGITAL VOLTMETER. LED GROUND  $\nabla$  CHASSIS GROUND  $\text{r}r$

CAUTION: THIS SCHEMATIC IS PROVIDED FOR USE BY QUALIFIED PERSONNEL. TO AVOID RISK OF ELECTRIC SHOCK, REFER SERVICING TO QUALIFIED SERVICE PERSONNEL. DO NOT PERFORM ANY SERVICING BEYOND WHAT EXPLAINED IN THE OPERATING INSTRUCTIONS.

TEST POINT CONDITIONS: CONTROLS SET AS FOLLOWS.  
INSTRUMENT CHANNEL GAIN: REV/EFF # 1, 10', LON. MID. HIGH # 1, 5', MTC. & AUX. CHANNEL GAIN & REV/EFF # 1, 10', EFF. RETURN. LINE DIT. LEVEL # 1, 10'. EQ. FLAT. INPUT SIGNAL 1.5v/1ms SINE WAVE @ 10Kz.

TP	VOLTAGE (V)	WAVEFORM
1	15V	~
2	.35V	~
3	.35V	~
4	14.5V	~
5	.35V	~
6	.35V	~
7	.35V	~
8	.35V	~
9	.35V	~
10	15V	~
11	15V	~
12	.35V	~
13	15V	~
14	26V	~
15	86V	~
16	15V	~
17	23V	~
18	.55V	~

TP	VOLTAGE (V)	WAVEFORM
19	.55V	~
20	2V	~
21	2V	~
22	.8V	~
23	15V P-P	~
24	3V P-P	~
25	2V P-P	~
26	.15V	~
27	.15V	~
28	.15V	~
29	.15V	~
30	.15V	~
31	.15V	~
32	.15V	~
33	.15V	~
34	.25V	~
35	.27V	~

IC #	VOLTAGE	PIN	VOLTAGE	PIN	VOLTAGE
IC1	+7.5V	7	-7.5V	15	-15V
IC2	---	---	---	---	---
IC3	---	---	---	---	---
IC4	---	---	---	---	---
IC5	---	---	---	---	---
IC6	---	---	---	---	---
IC7	---	---	---	---	---
IC8	---	---	---	---	---
IC9	---	---	---	---	---
IC10	---	---	---	---	---
IC11	---	---	---	---	---
IC12	---	---	---	---	---

