

March 8th, 1972

Conversion of old YBA-1 with 5AR4 rectifier and ^{7027A}~~7027A~~ output tubes to solid state rectifier and 6CA7 output tubes:

The old circuit (1) fits on old circuit (2) at points A B C D and E to convert the rectifier. It may be possible to fit some of the PH204's right on the old 5AR4 socket as terminal points, or, solder in a separate terminal lug strip.

The 6CA7 and the 7027A have the same tube basing except that you will have to connect G3 pin 1 to pin 8 externally for the 6CA7. We suggest also a 1.5K $\frac{1}{2}$ W resistor in series with the G1 on pin 5 of the 6CA7 to prevent oscillation. We suggest you reduce R30 from 56K to 47K to make the no signal grid bias voltage - 38V.

Except for the transformer voltages, circuit 3 shows the amplifier converted to 6CA7's. The addition of the shock mount rubber feet will insure longer tube life.

We have included the latest schematic for reference but we do not recommend that you delete the ~~choke~~ in your conversion.

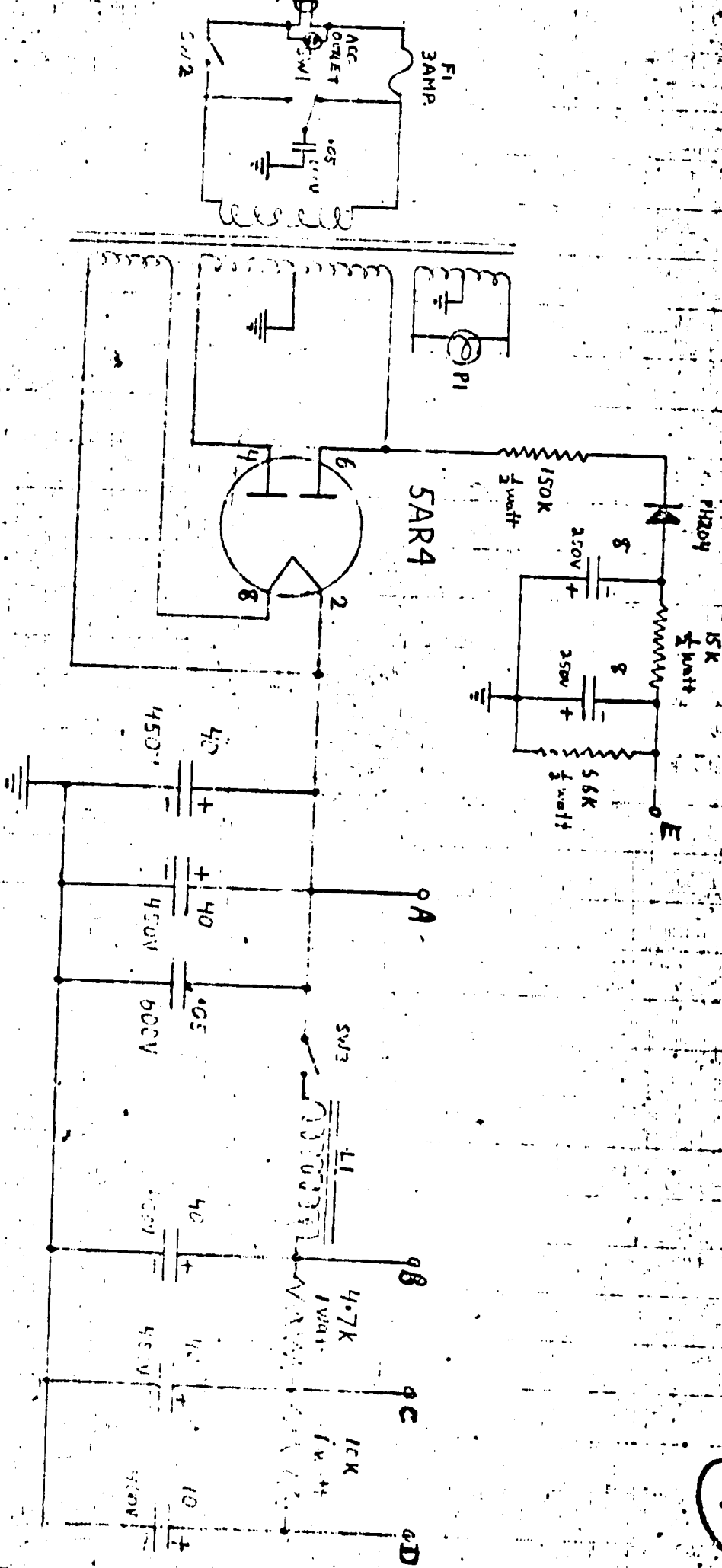
Yours truly,
YORKVILLE SOUND LIMITED

P. A. Hallam, P. Eng

PAH:vc

(9)

1.



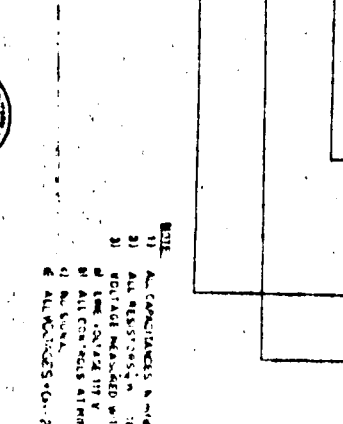
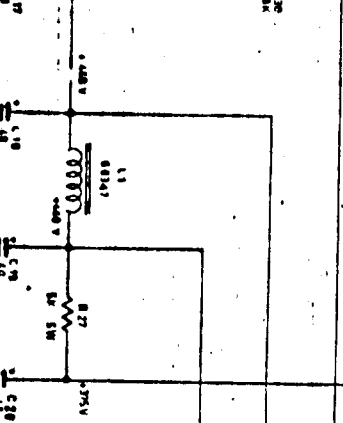
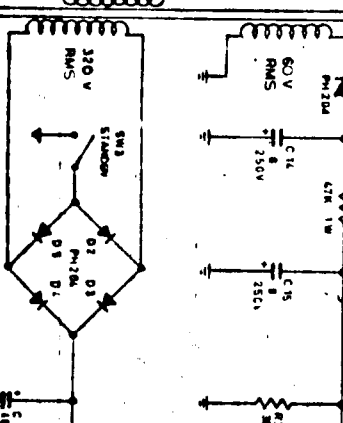
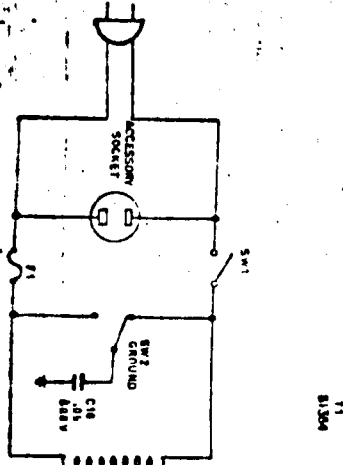
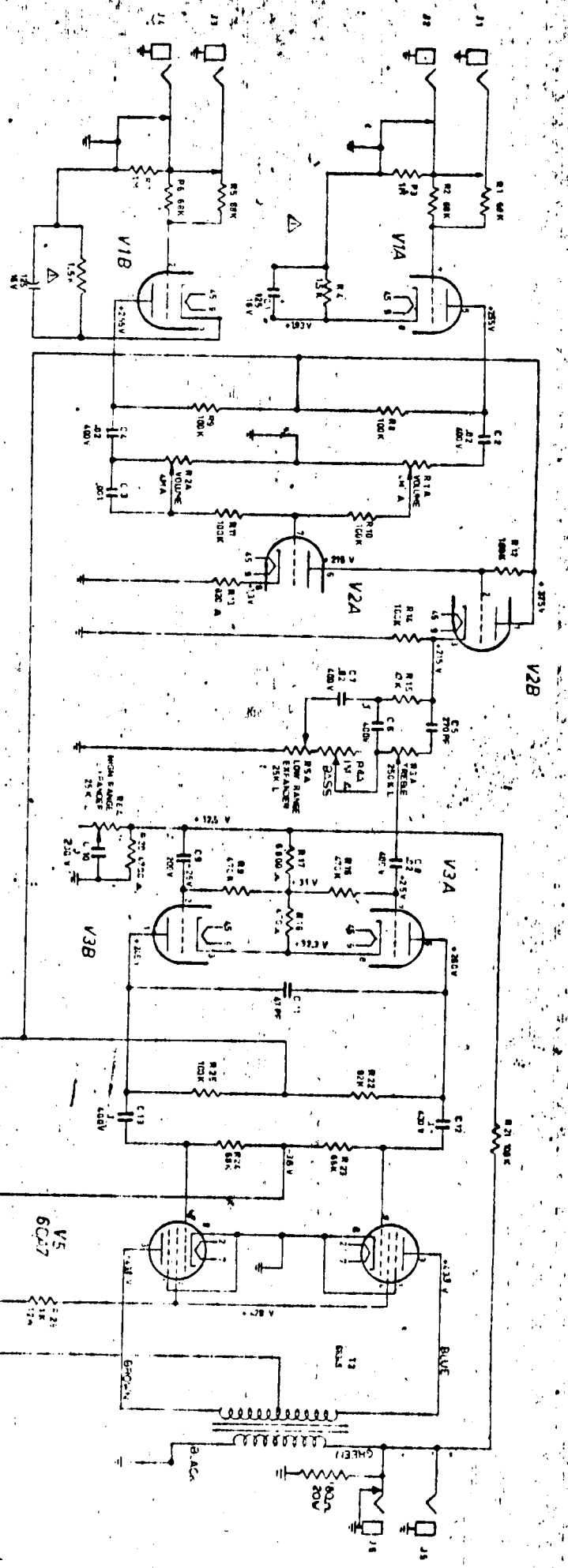
YBA-1 Power Supply Using Tube Rectifier

April - 1966

YORKVILLE SOUND LTD
TORONTO CAN.

YORKVILLE SOUND LTD

V1 12AX7A
 V2 12AX7A
 V3 12AX7A
 V4 6CA7
 V5 6CA7



NOTE:
 1) ALL CAPACITANCES IN OHMS UNLESS OTHERWISE SPEC'D
 2) ALL RESISTORS IN OHMS UNLESS OTHERWISE SPEC'D
 3) DIODES INCLUDED WITH THE EQUIPMENT
 4) ALL COMPONENTS AT NOMINAL VALUE
 5) ALL COMPONENTS AT NOMINAL VALUE
 6) ALL COMPONENTS AT NOMINAL VALUE



YORKVILLE SOUND LTD.
 25 TRAVANCA
 JAM 1/6/67
 BASS MASTER

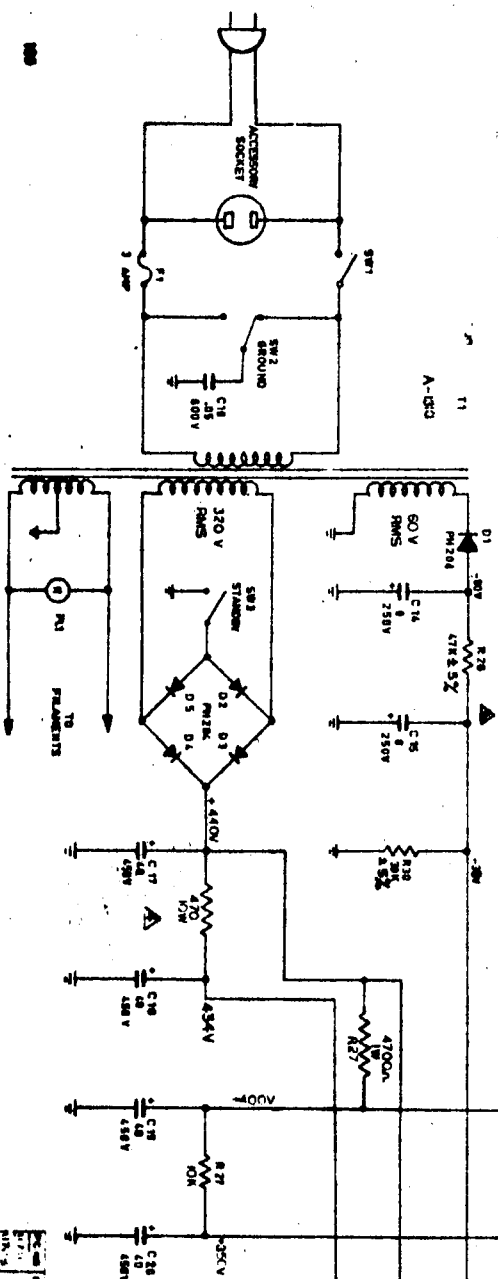
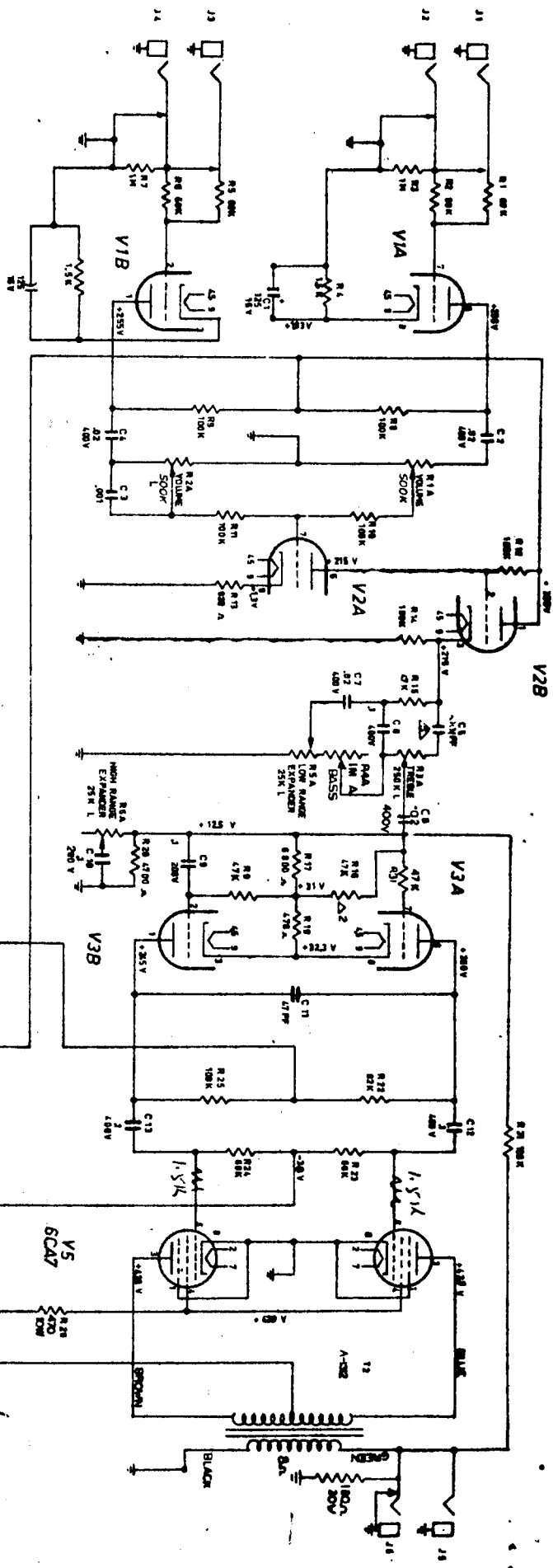
3

V1
12AX7A

V2
12AX7A

V3
12AX7A

V4
6CA7



- NOTE:
- 1) ALL CAPACITANCES IN WFD UNLESS OTHERWISE SPEC'D
 - 2) ALL RESISTORS IN WFD UNLESS OTHERWISE SPEC'D
 - 3) VOLTAGE INDICATED WITH IT IN PARENTHESIS WITH IT
 - 4) LINE VOLTAGE 117 V
 - 5) ALL COMPONENTS AT MINIMUM
 - 6) NO SERIAL
 - 7) ALL DIMENSIONS - 0.1-20%

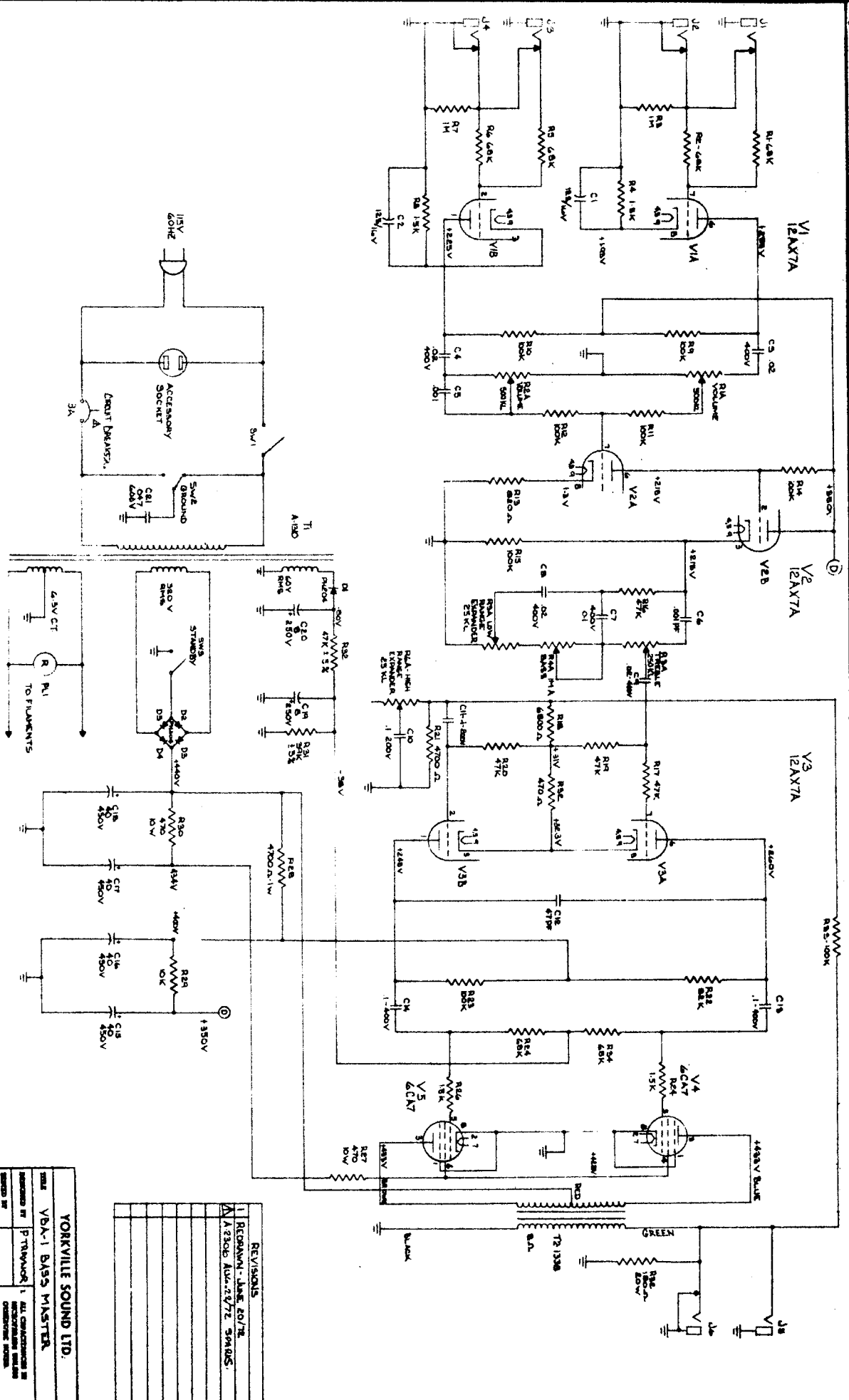
latest
Version

YORVILLE SOUND LTD.

YBA-1
BRASS MASTER

5. TRANSMITTER
1960





LAST RESISTOR - R34 LAST CAPACITOR - C21

REVISIONS

1	REWORK - LINE 60/78
2	A330C (W-27/72) 5/8/05

YORKVILLE SOUND LTD.

TYPE: VBA-1 BASS MASTER

DESIGNED BY: P. TRIVANOR

DESIGNED BY: B. SPARKS

1. ALL COMPONENTS TO BE USED IN THIS PROJECT MUST BE OF THE HIGHEST QUALITY AVAILABLE.

2. ALL COMPONENTS MUST BE USED AS SPECIFIED IN THIS PROJECT.

3. ALL COMPONENTS MUST BE USED AS SPECIFIED IN THIS PROJECT.

4. ALL COMPONENTS MUST BE USED AS SPECIFIED IN THIS PROJECT.

5. ALL COMPONENTS MUST BE USED AS SPECIFIED IN THIS PROJECT.

6. ALL COMPONENTS MUST BE USED AS SPECIFIED IN THIS PROJECT.

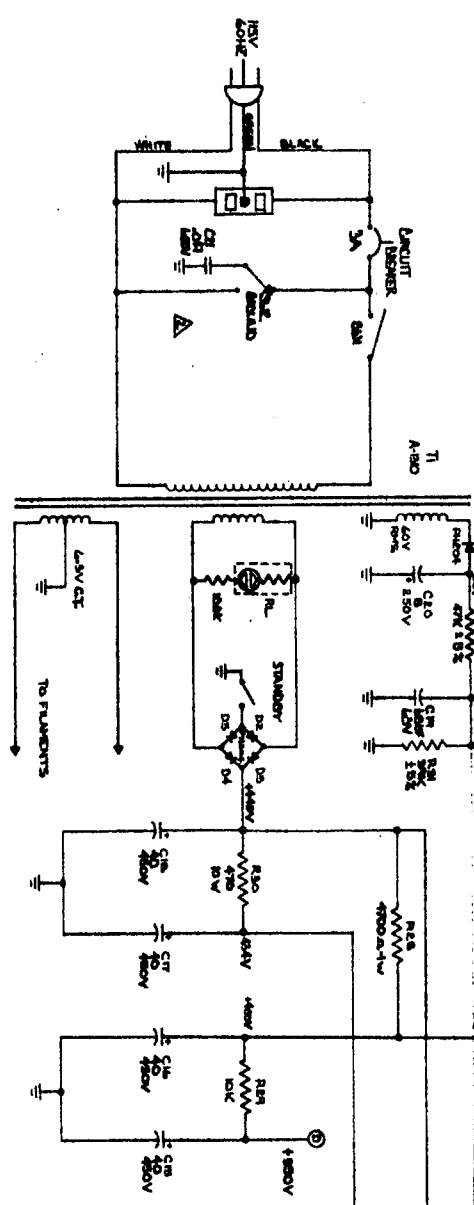
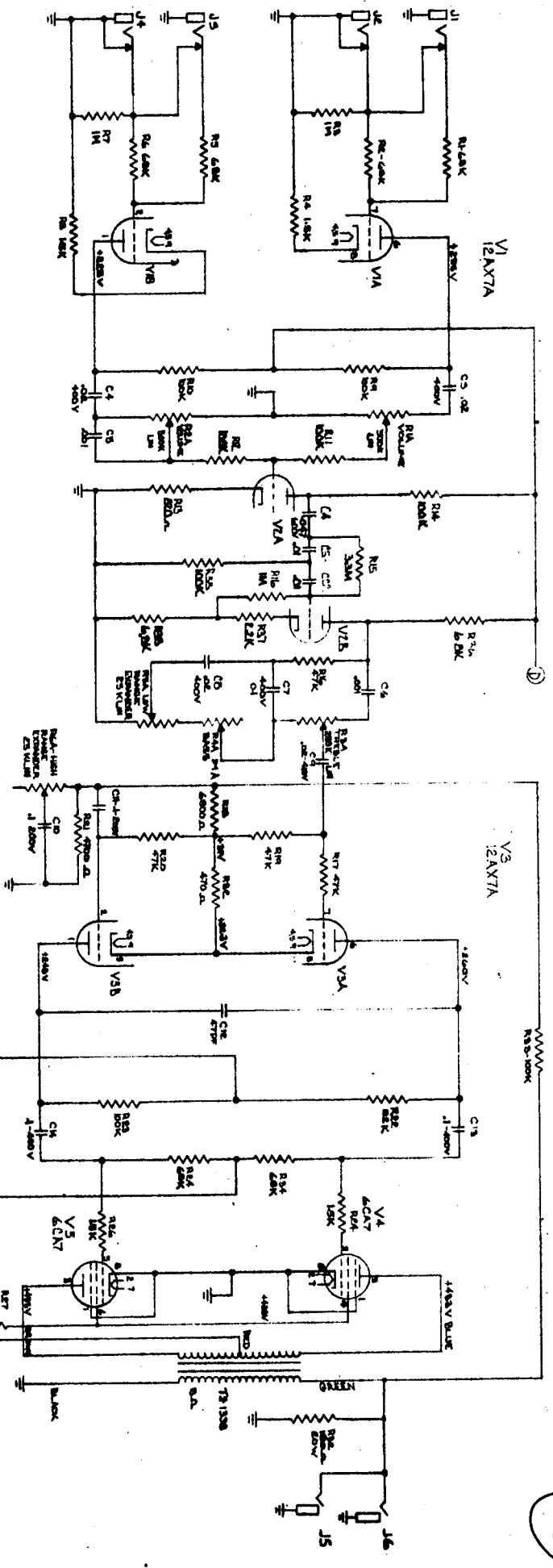
7. ALL COMPONENTS MUST BE USED AS SPECIFIED IN THIS PROJECT.

8. ALL COMPONENTS MUST BE USED AS SPECIFIED IN THIS PROJECT.

9. ALL COMPONENTS MUST BE USED AS SPECIFIED IN THIS PROJECT.

10. ALL COMPONENTS MUST BE USED AS SPECIFIED IN THIS PROJECT.

11/4/77



YORKVILLE SOUND LTD.

YORK 1

1	REVISIONS	DATE	BY
1	REVISION - JANE DOE	1/1/72	J.D.
2	REVISION - JANE DOE	2/1/72	J.D.
3	REVISION - JANE DOE	3/1/72	J.D.
4	REVISION - JANE DOE	4/1/72	J.D.
5	REVISION - JANE DOE	5/1/72	J.D.
6	REVISION - JANE DOE	6/1/72	J.D.
7	REVISION - JANE DOE	7/1/72	J.D.
8	REVISION - JANE DOE	8/1/72	J.D.
9	REVISION - JANE DOE	9/1/72	J.D.
10	REVISION - JANE DOE	10/1/72	J.D.

1964/72

5